
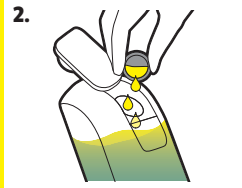
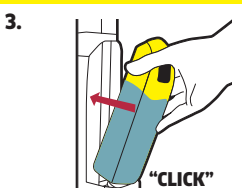



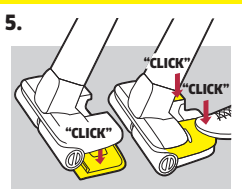
## FIRST STEPS BEFORE USE ERSTE SCHRITTE VOR DEM EINSATZ

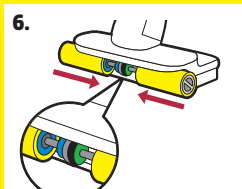
- 

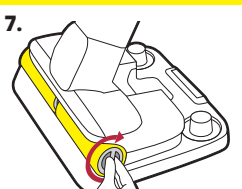
**1.**  
Fill fresh water tank /  
Frischwassertank füllen
- 

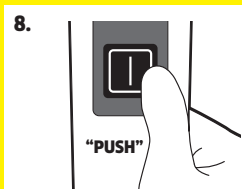
**2.**  
Fill in Kärcher detergent (1/2 cap) /  
Kärcher-Reinigungsmittel  
einfüllen (1/2 Deckel)
- 

**3.**  
Insert fresh water tank /  
Frischwassertank einsetzen
- 

**4.**  
Insert both charged batteries /  
Geladene Akkus einsetzen
- 

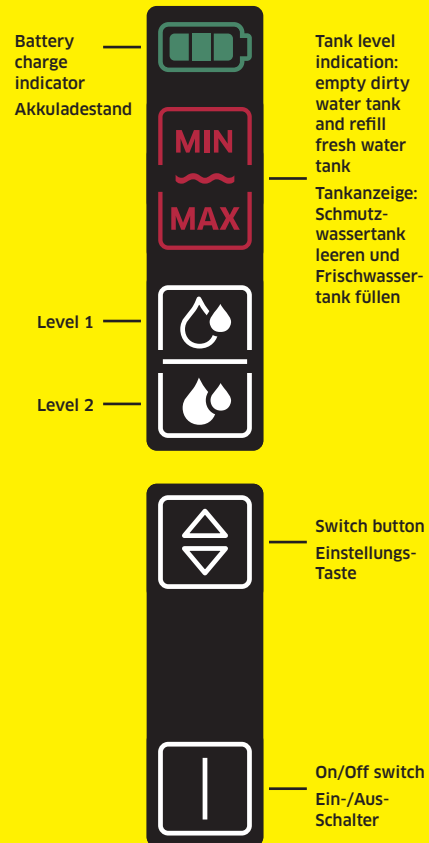
**5.**  
Place device upon dirty water tank and push  
down/Gerät mit Schmutzwassertank verrasten
- 

**6.**  
Check color code system /  
Farbcodesystem beachten
- 

**7.**  
Roller fixation /  
Walzen einsetzen
- 

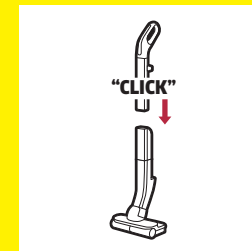
**8.**  
Press On/Off button and start cleaning /  
Zum Starten Ein-/Aus-Schalter drücken

## DISPLAY

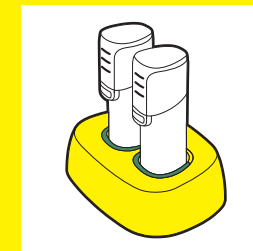


# FC 4-4 QUICKSTART GUIDE

### First assembly Erstmontage



Prior to first operation,  
place the battery pack(s) on the  
charger and charge completely

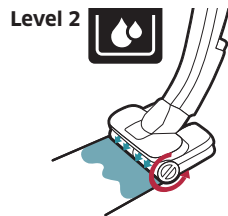
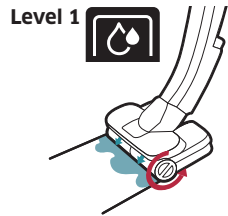


Scan code for videos  
Code scannen für Videos



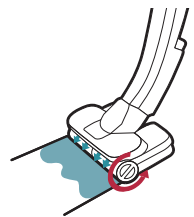


**SWITCH CLEANING MODE  
REINIGUNGSMODUS  
WECHSELN**

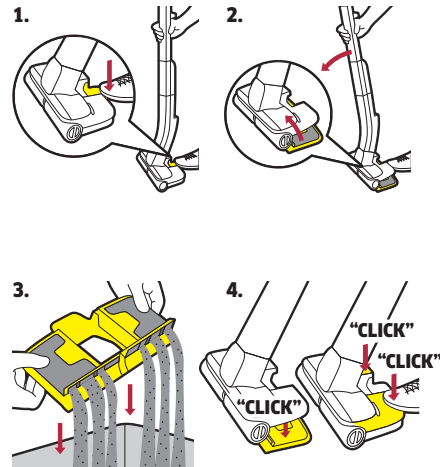


**USE LEVEL 2 UNTIL  
ROLLERS ARE  
SUFFICIENTLY  
MOISTENED**

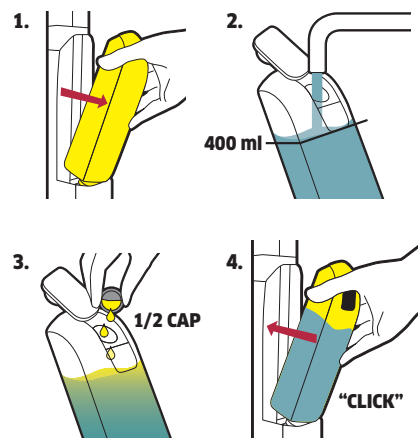
**LEVEL 2 VERWENDEN BIS  
WALZEN AUSREICHEND  
BEFEUCHTET SIND**



**EMPTY DIRTY WATER  
TANK  
SCHMUTZWASSERTANK  
LEEREN**

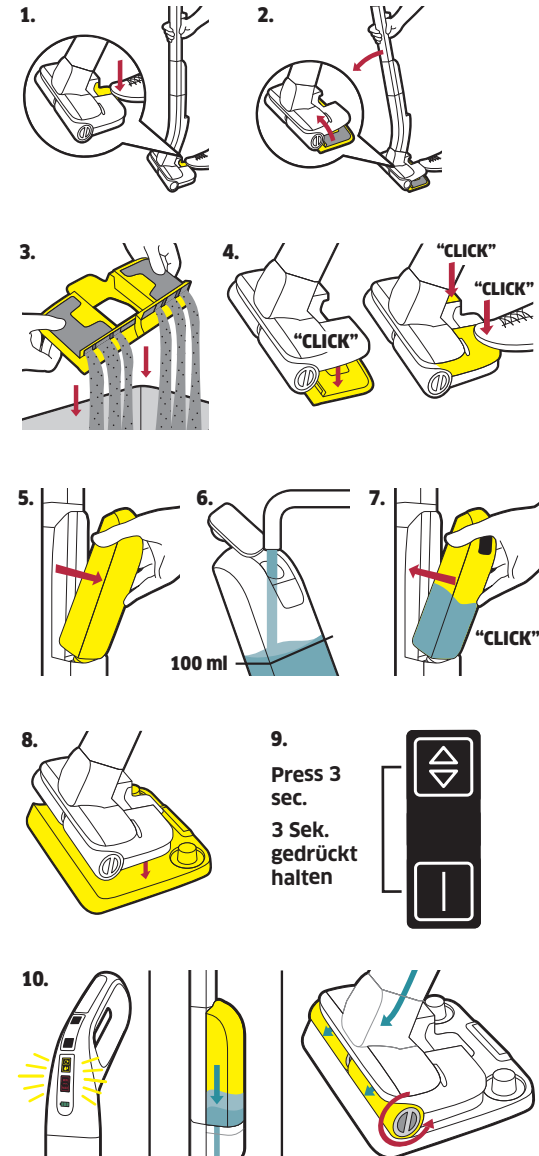


**REFILL FRESH WATER TANK  
FRISCHWASSERTANK AUFFÜLLEN**



**CLEANING AND STORING  
REINIGUNG UND AUFBEWAHRUNG**

**Step 1: Clean the device  
Schritt 1: Gerät reinigen**



Please wait about 2 min. Bitte ca. 2 Min. warten



**Step 2: Store the device  
Schritt 2: Gerät verstauen**

